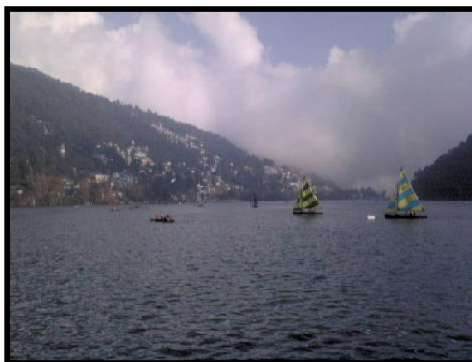




BIRLA INSTITUTE OF APPLIED SCIENCES, BHIMTAL, NAINITAL

PLACEMENT BROCHURE BATCH 2011



CONTACTS:

Birla Institute of Applied Sciences,
Bhimtal, Nainital
Uttarakhand-263136

Tel.: 05942-247032, +91-9412351583

E-mail: placement@birlainstitute.co.in

DIRECTOR'S MESSAGE



*It gives me great pleasure to invite your esteemed organisation to our institute for campus placement. I am sure your HRD team visit to our institute will be rewarding. Located in a small and beautiful hill station of Bhimtal, we are fully residential and both the facilities as well as the environs provide the right atmosphere for studies and all round development. We are attracting the best students to our campus at the time of counselling **having a policy of no management quota**. With 50% seats for students from Uttarakhand and remaining filled from all over India strictly on the basis of merit, we have a very good mix.*

The proven track record of our former students makes us the first choice of most candidates at the time of state counselling. Relatively modest expenses and provision of merit based scholarships makes it possible for bright students with limited means to join our institute. The tradition of care and quality teaching has assured that the students are well prepared. To make sure that they have the latest tools and techniques at their disposal, we organize special courses round the year. Details of all these are outlined in this brochure. I would like to emphasize only on one thing – we are also into community development in a big way through our sister organisation, the Birla Institute of Scientific Research located in the same campus. This helps us in bringing our students closer to rural India and make them better citizens. I look forward to a positive response from you.

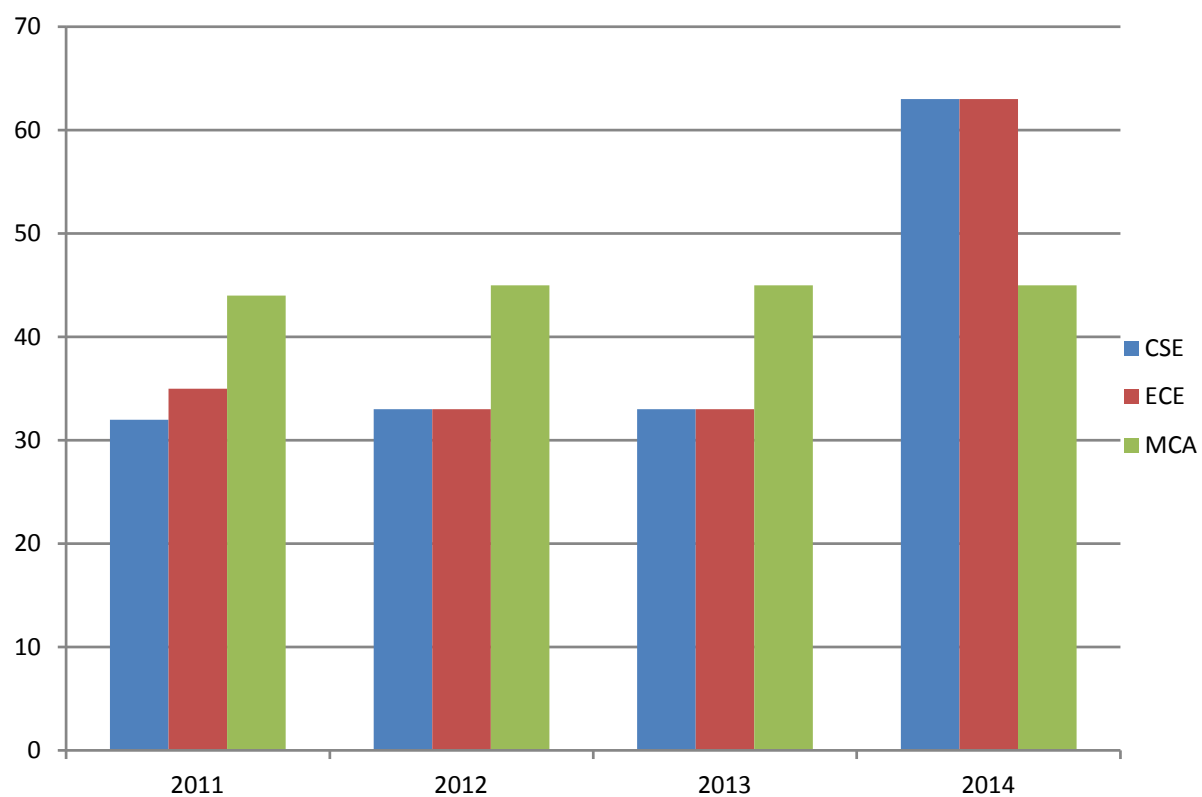
Sincerely,

A handwritten signature in dark ink, appearing to read 'A. K. Pant', written in a cursive style.

A. K. Pant

TOTAL PASSING OUT STRENGTH

Year	Branch			Total
	CSE	ECE	MCA	
2011	32	35	43	111
2012	33	33	45	111
2013	33	33	45	111
2014	66	66	45	177





FROM PLACEMENT CELL'S DESK

The desire to secure a job for each student is the motivating force behind the working of every placement cell, but for us the real challenge lies in helping them open the door to opportunity - the opportunity to strive for a better & brighter tomorrow.

Our previous batches are employed in companies like Accenture, Ericsson, Infosys, HCL Comnet, Reliance, Samsung, IBM, Rockwell Automation, Birlasoft, Dell PerotSystems, NIIT Technologies, Wipro, Oracle etc. & we are confident that the members of Batch '11 will continue with the tradition of excellence that has been set by their seniors.

The present batch has good Communication & Technical skills besides the right temperament and would prove to be assets to any organization that they work for.

Placement Cell



Birla Institute Of Applied Sciences (BIAS) is located in the most picturesque surroundings of the lake town of **Bhimtal**, in the Nainital district of **Uttarakhand**.

The campus is spread over an area of about 10 hectares of prime land amongst the Kumaun hills, thus providing a cool climate and lush green environmental surroundings, ideally conducive for academic pursuit. In a relatively short span of its existence, the institute has blossomed into a vibrant technical institution by way of its academic curriculum, experienced faculty, well-equipped laboratories and regular holding of technical seminars, lectures and personality development programmes.

ORIGIN

The journey began in 1973 with the establishment of a centre, of the **Birla Institute of Scientific Research (BISR)** founded by **Mr. B. M. Birla**, in the then developing Bhimtal industrial belt. The aim was to provide basic workshop facilities and testing grounds for entrepreneurs to set up industrial units in the region.

With the backing of educational institutions like **Birla Institute of Technology, Mesra, Ranchi** and **B. M. Birla Science Centre, Jaipur**, it was a natural progression that an academic institution was established in the same campus with renowned industrialists **Mr. G. P. Birla & Mr. C. K. Birla** being amongst its founder members.

The institute commenced its academic programme in 1989 in computer education, leading to MCA degree awarded by Kumaun University. Expanding the horizons for professional education, the institute started a 3-year post B.Sc B.E course in Electronics & Communication in the session 2000-01. This course has now been converted into a 4-year B.Tech programme with effect from the academic year 2003-04 and also a branch in Computer Science and Engineering has been started from August 2006.

The Institute has synergistic networking with B.I.T., Ranchi, along with its extension centers at Noida, Allahabad, Jaipur, Muscat, Ras Al Khaimah and Bahrain as well as with other prestigious organizations, and has been receiving generous and active support from the Central and State governments from time to time.

A **17 member governing board** manages the Institute with **Dr. S. K. Joshi**, former President Indian National Science Academy & Ex Director-General, CSIR, as its chairman and **Dr. H. C. Pande**, Vice Chancellor, Emeritus, B.I.T, Ranchi, and Secretary General of BISR as member, besides representatives of Government, industry and academia.

INFRASTRUCTURE

The institute campus consists of a Central Academic Building, laboratory blocks, computer centre, workshop and staff quarters besides separate hostels for boys and girls. It is **fully residential** and includes the mess, common room & reading room along with facilities for indoor/outdoor games. Also, the institute is self-contained with its own security arrangements and **Co-operative** to take care of the sundry needs of the residents.



The Central Academic Building consists of lecture halls, laboratories, the conference room and various offices. It also includes the Central Library which is a quiet, serene place well equipped with books & journals of all kinds.

There exists a separate computer block that houses the computer labs, some classrooms and a CISCO laboratory. **Two Leased Line connections** (BSNL 2Mbps and Reliance 1 Mbps) provide internet connectivity **24X7**.





Well-equipped laboratories are also present for Industrial Electronics, Microprocessor, Control Systems, Measurement & Instrumentation, Electrical Machines, Basic Electronics, Digital Electronics, Microwave, Optical fiber Communication, Advanced Communication, Mechanics, Physics & Chemistry.

Special Features

1. DIGITAL LIBRARY:

Supported by the Government of Uttarakhand, a **Digital Library** has been established with **Oneserver (750 GB mass storage)** and **15 Computer terminals**. It is connected world over with institutions of repute via DSpace. Recently a subscription to IEEE Computer Society in Digital Library has also been acquired.

2. LANGUAGE LAB:

A **language lab** has also been set up which enhances the verbal communication skills of students. This houses **the latest language teaching software**. Apart from honing their skills in English, it helps the students learn languages like **French, German etc.**

CO-CURRICULAR ACTIVITIES

The institute provides various types of courses for students to fulfill the current market demands.

They are:

- * **J2EE FROM DUCAT, NOIDA**
- * **CISCO CCNA**

Trainings are also provided in **Multisim, Ultiboard, MATLAB, PC-Hardware, PCB Designing, Open Source Softwares, .Net**, etc. within the institute campus.



To cope with the current market, regular trainings on Communication skills and Personality Development are arranged within the Institute campus, in collaboration with T.I.M.E., Dehradun and Hero MindMine, New Delhi at regular intervals.

OTHER STUDENT ACTIVITIES

Besides the educational sphere, BIASians are also engaged in several extra-curricular activities. Various societies help the students nurture their talents and develop their creative skills.

SPECTRUM-the annual college fest then provides the ideal platform for BIAS to showcase its finery in the best possible hues. Many institutes participate in this extravaganza providing a competitive environment wherein the fittest survive and are thence rewarded.



STUDENT WELFARE COMMITTEES: The institute being fully residential, various committees like the Mess Committee, Hostel Committee etc. look after day-to-day problems of the students.

Highlander's Club: No child's play, this is a society associated with adventurous excursions that include Trekking & Rock Climbing

OUR SUCCESS STORIES...

Name	Year Of passing	Course Attended (Btech/MCA)	Current Company
Mohitash Dwivedi	2007	B.E.	Accenture (USA)
Dheeraj Bhatt	2007	B.E.	Infosys
Anand Mohan Singh	2007	B.E.	Torry Harris Business Solution
Namish Tiwari	2005	MCA	Arcot Systems
Nishant Pandey	2005	MCA	IBM (USA)
Gaurav Kandpal	2005	B.Tech	Optical Fusion
Mohit Mehrotra	2005	B.Tech	Infosys
Akash Taneja	2004	MCA	Arcot Systems
Ashish Andola	2004	B.Tech	Honeywell Solutions
Poonam Kandpal	2008	B.E.	Accenture
Ved Prakash Pandey	2008	B.E.	IBM
Vikram Sah	2005	MCA	Accenture
Anurag Bisht	2005	MCA	Polaris Software Lab
Kapil Chaudhary	2005	B.Tech	Vodafone
Vishalendu Pandey	2005	B.Tech	Sterling Commerce
Saurabh Mishra	2005	MCA	IBM Global Services
Amit Sharma	2005	MCA	SAP Labs
Nitin Dwivedi	2005	B.Tech	IBM
Manoj Aggarwal	2005	MCA	CSC
Pradeep Pant	2005	MCA	ITC Infotech
Vipul Aggarwal	2005	MCA	Momentum
Pankaj Kumar Khetwal	2006	MCA	NIC
Tashi Negi	2005	MCA	Delloite
Pradeep Agrawal	2007	B.E.	Infosys
Digambar Mehra	2005	B.Tech	Vodafone
Jitesh Mathur	2005	Btech	Ericsson
Deep chand Bhatt	2005	Btech	NSN
Piyush Pant	2003	Btech	Ericsson
Ravindra Negi	2005	Btech	Ericsson
Kanika Gupta	2007	BE	CSC Noida
Shayista Parveen	2007	BE	Fiserv
Vinod Chandra Joshi	2007	MCA	Sopra Group
Naveen Bhatt	2006	MCA	Oracle
Lubna Rasheedi	2006	MCA	American Express
Rohit Tamta	2007	BE	Rockwell Automation
Geeta Tripathi	2007	BE	Xavient Noida
Ritika Pande	2004	MCA	Cadence Technology Noida
Harish Dhaundhiyal	2006	MCA	TCS
Gaurav Mittal	2007	BE	HCL Comnet
Pawan Joshi	2007	BE	Ericsson
Kamal Negi	2007	BE	Nokia Seimens
Devesh Bhaisora	2007	BE	Halliburton
Dheeraj Lohani	2007	BE	AEM

WHAT MAKES B.I.A.S. SPECIAL...



Every institute has its share of buildings and labs but what makes BIAS special is the kind of people who work in these buildings and labs. We have a **management** that has the experience of running a renowned institution like **BIT Mesra**, a **Director** who has spent most of his working career at Roorkee University (currently known as **IIT Roorkee**) and faculty members who combine knowledge and experience to give the students nothing but the very best.

By taking only a small number of students every year, we ensure that each student is given the kind of attention and facilities necessary for their all round development. **Quality rather than Quantity** has always been the hallmark of this institute. Our assertions are further supported by the following facts:

- ☐ We are amongst the first institutes in Uttarakhand to start a Masters programme in Computer Applications.
- ☐ The Institute holds the national record for maximum percentage of students qualified for IBM-DB2.
- ☐ Plans are afoot to connect the institute to BIT, Mesra and other sister institutions via video conferencing.
- ☐ If needed, we can fulfil the criteria of minimum number of students by calling in students from Pantnagar Institute of Technology, KEC Dwarahat, GBPEC Pauri, COER, DIT Dehradun etc.

MS-DOS C/C++ MS ACCESS

HTML Java MATLAB

ORACLE 8i/9i and Developer

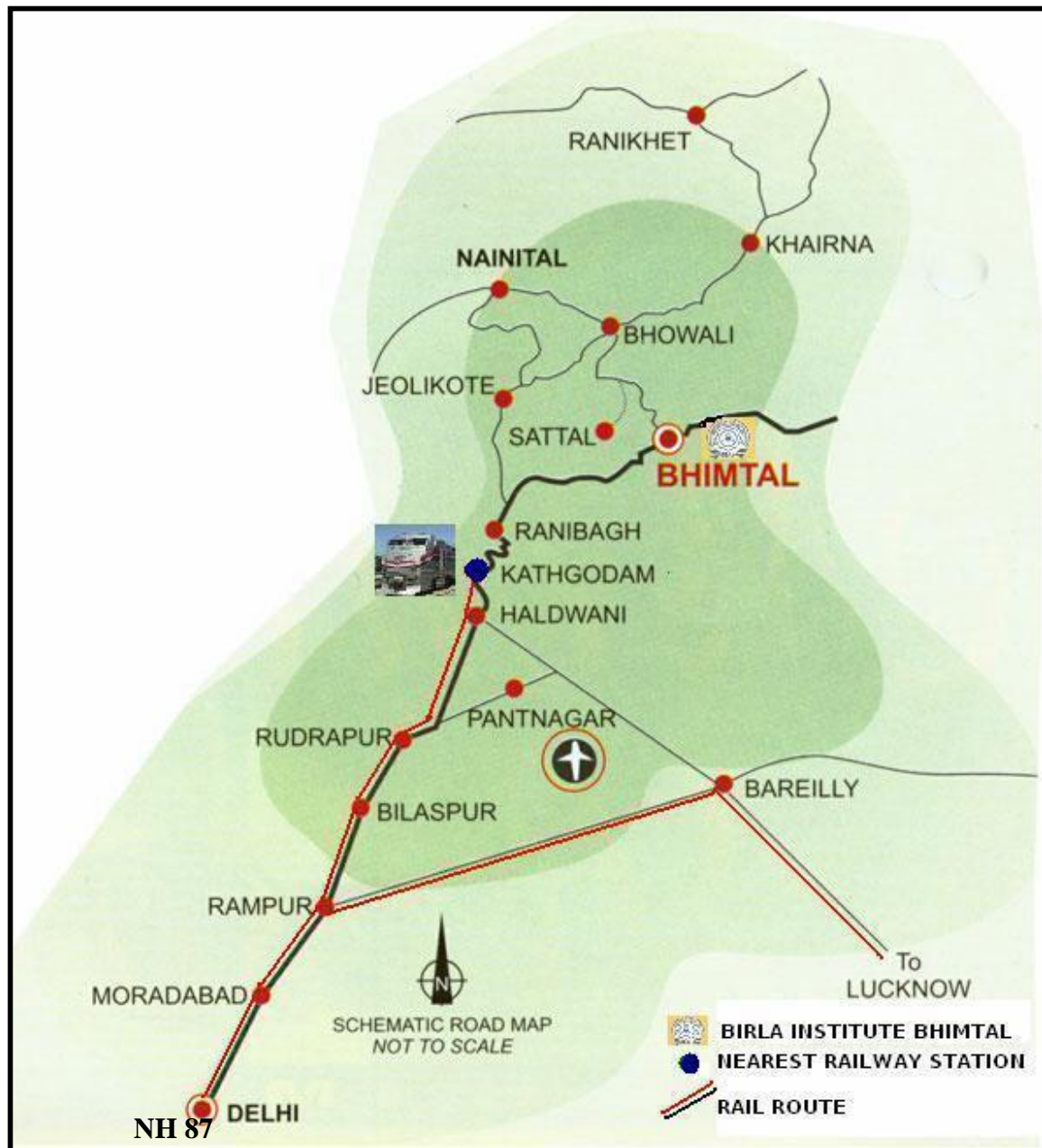
JavaScript Windows

Multisim Linux/Unix

ALP-8085/6

Visual Basic

Rail/Road Map



RESPONSE SHEET

Name of the Organizaton:

Address:

Telephone/Fax:

e-mail:

Name of the Respondent:

Designation:

Contact No. & e-mail:

Job Profile:

Requirements(in numbers):

Process of Selection:

☐ Aptitude Test

☐ Technical Test

☐ Psychological Test

☐ Interview

☐ Group Discussion

☐ Others (Please Specify):

Convenient Venue:

☐ Campus

☐

Others(specify):

Further Queries or Requirements(if any):

.....
.....
.....
.....

OUR EVER GROWING LIST OF RECRUITERS

